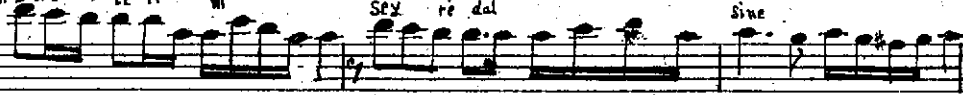
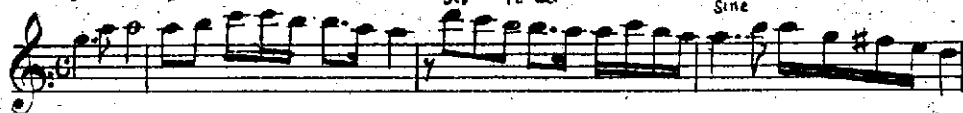


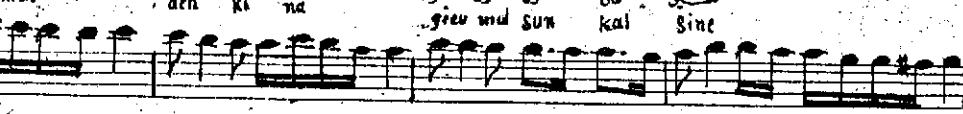
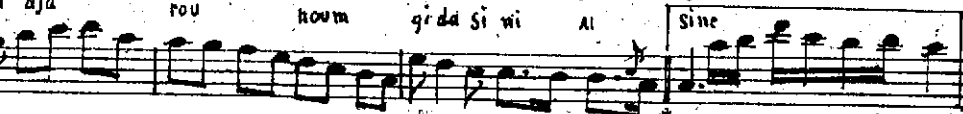
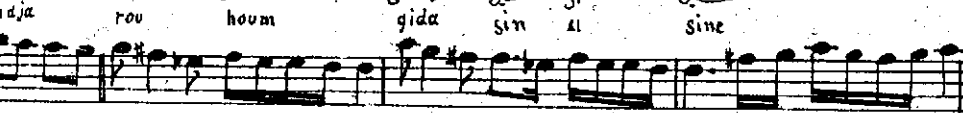
Cont: 184

مُحَمَّدٌ كوز لرم كوز لری کی سیدہ و السبہ

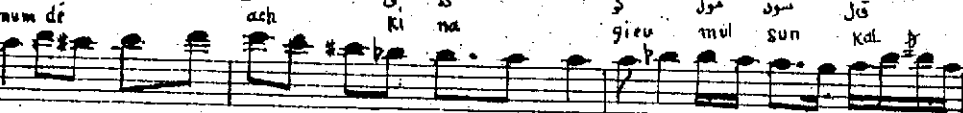
صُوفِيكَ



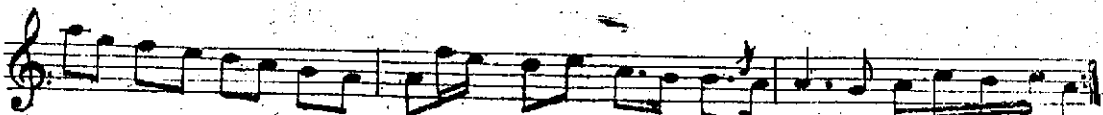
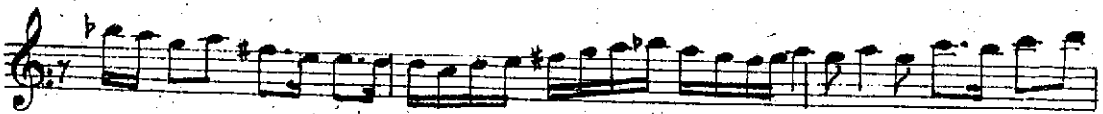
do you



A musical staff with a treble clef. The word "gicuy" is written above the staff. The melody consists of a quarter note on G4, followed by a quarter note on A4, and a quarter note on B4.



A musical staff with a treble clef and a key signature of one flat (B-flat). The word "Sine" is written above the staff. The melody consists of a half note on G4, a quarter note on A4, a quarter note on B4, and a half note on C5.



کوزلرم کوزلر کی سیدہ راسیہ      ددیو غبر - رحم غدا سنی السیہ      کوزلرم ددیو غبر کوزلرم کوزلرم      نکات -